

Features :

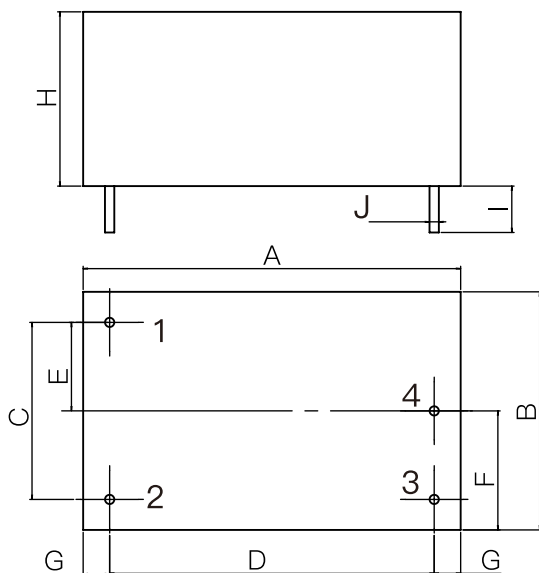
- Ultra-small volume, thickness of only 1.5 cm
- Wide voltage input range:85-305Vac,100-400Vdc
- Multiple protection
- Low power consumption
- No load power consumption<0.05W
- Built-in EMI filter circuit
- 3 years warranty
- 100% full load burn-in test

Specification

MODEL		RM-01-5	RM-01-9	RM-01-12	RM-01-15	RM-01-24	
INPUT	VOLTAGE RANGE	85~ 305VAC 100 ~ 400VDC					
	FREQUENCY RANGE	47 ~ 440Hz					
	EFFICIENCY(Typ.)	70%	73%	79%	77%	81%	
	AC CURRENT(Typ.)	55mA/ 115VAC 34mA / 230VAC					
	INRUSH CURRENT(Typ.)	20 A / 230 VAC					
	LEAKAGE CURRENT	<0.1mA at 265VAC/50Hz					
OUTPUT	DC VOLTAGE	5.1V	9.0V	12V	15V	24V	
	RATED CURRENT	200mA	111mA	83mA	66mA	41mA	
	CURRENT RANGE	0-200mA	0-111mA	0-83mA	0-66mA	0-41mA	
	RATED POWER	1W	1W	1W	1W	1W	
	RIPPLE&NOISE(max.)	150mVp-p	150mVp-p	150mVp-p	150mVp-p	150mVp-p	
	VOLTAGE TOLERANCE	±3.0% (±5.0% max)					
	LINE REGULATION	±1.0%					
	LOAD REGULATION	±1.0%					
	SETUP, RISE TIME	20ms/230VAC	50ms/115VAC at full load				
	HOLD UP TIME(Typ.)	40ms/230VAC	15ms/115VAC at full load				
PROTECTION	OVER LOAD	≥105%rated output power					
ENVIRONMENT	WORKING TEMP	-40 ~ +80 °C (Refer to 'derating curve')					
	WORKING HUMIDITY	85% .RH max					
	STORAGE TEMP.,HUMIDITY	-40 ~ +85°C, 10 ~ 95% RH					
	TEMP. COEFFICIENT	0.03%/ (0~ 50°C)					
	VIBRATION	10-500Hz,2G10min./1cycle, 60min.each along X,Y,Z axes					
Safety and electromagnetic compatibility	Safety standards	EN62368,IEC62368,UL62368					
	Withstand voltage	I/P-O/P:3KVAC					
	Isolation resistance	I/P-O/P: >100M Ohms/500VDC 25°C 70% RH					
	Electromagnetic compatibility emission	Parameter	Standard			Test Level / Note	
		Conducted emission	BS EN/EN55032(CISPR32),FCC PART 15 / CISPR22 CAN ICES-3(B)/NMB-3(B),CNS13438,GB17625.1EAC TP TC 020,MSIP KN32			Class B	
		Radiated emission	BS EN/EN55032(CISPR32),FCC PART 15 / CISPR22 CAN ICES-3(B)/NMB-3(B),CNS13438,GB17625.1EAC TP TC 020,MSIP KN32			Class B	
		Harmonic current	BS EN/EN61000-3-2,GB9254			Class A	
	Voltage flicker	BS EN/EN61000-3-3			-----		
	Electromagnetic compatibility immunity	BS EN/EN55035					
		Parameter	Standard			Test Level /Note	
		ESD	BS EN/EN61000-4-2			Level 4, 8KV /15KV	
		RF field susceptibility	BS EN/EN61000-4-3			Level 4	
		EFT bursts	BS EN/EN61000-4-4			Level 3, 2KV	
Surge susceptibility		BS EN/EN61000-4-5			Level 3, 1KV		
Conducted susceptibility		BS EN/EN61000-4-6			Level 4		
Magnetic field immunity		BS EN/EN61000-4-8			Level 4		
Voltage dips , interruption	BS EN/EN61000-4-11						
OTHERS	MTBF	200K hrs min. MIL-HDBK-217F(25)					
	DIMENSION	32.5*20.5*15.00mm.					
	PACKING	13 pcs/tubes 78tubes/box box: 360*300*250mm,15g/pcs 233g/tubes 17.33kg/box					

NOTE	<p>1. All parameters NOT specially mentioned are measured at 230VAC input, rated load and 25°C of ambient temperature.</p> <p>2. Ripple and noise is according to this manual application circuit connection, the use of 300mm twisted-pair, bandwidth of 20MHZ measured.</p> <p>3. Tolerance: includes set up tolerance, line regulation and load regulation.</p> <p>4. The power supply is considered as a component in the system, which needs to be verified with the terminal equipment.</p>
-------------	---

Mechanical specification

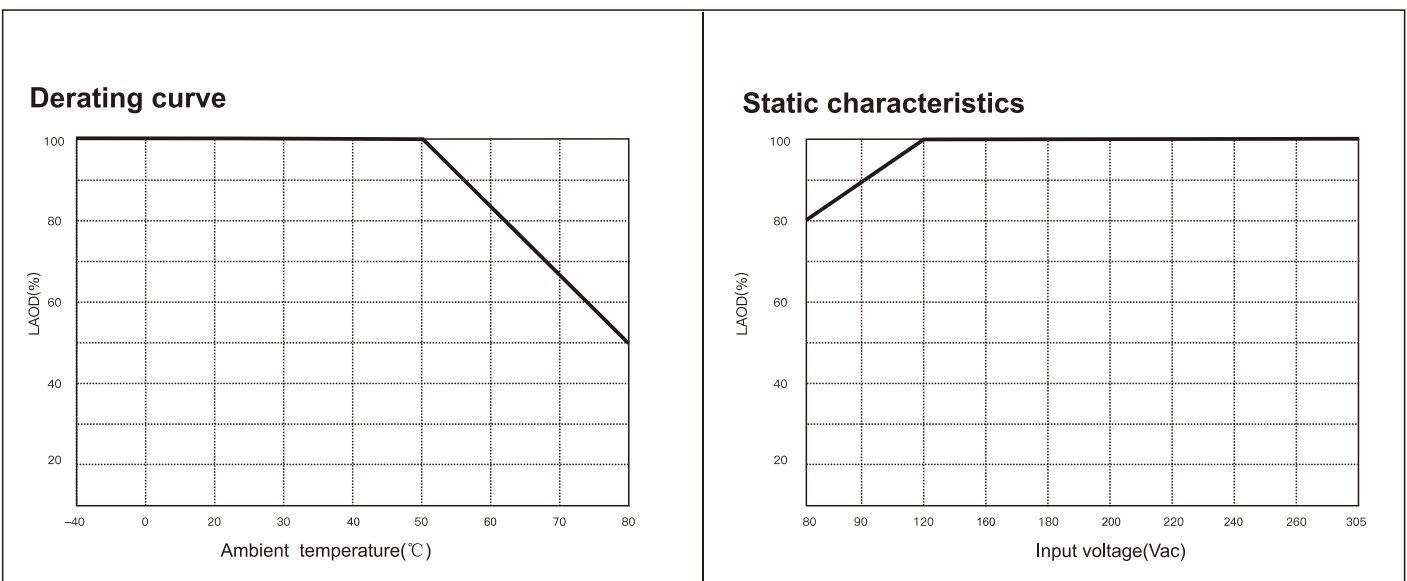


Note
 Unit: mm ;
 Terminal length: ≥ 4.0 mm ;
 Size of terminal section: 0.8mm ;
 Terminal tolerance: ± 0.1 mm ;
 undeclared tolerance: ± 0.5 mm ;

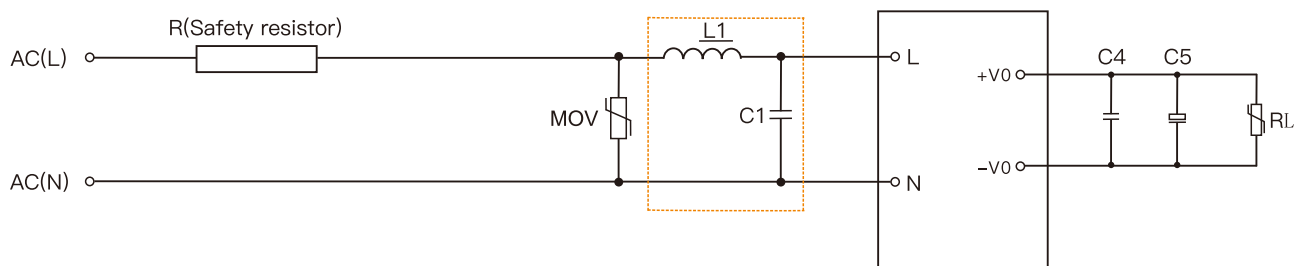
PIN NO.	Assignment
1	AC
2	AC
3	-VO
4	+VO

DIM	A	B	C	D	E	F	G	H	I	J
尺寸	32.5	20.5	15.24	27.94	7.62	10.25	2.28	15	≥ 4	0.8

Derating curve



Typical application



Note:

1. Output filter capacitor C5 is electrolytic capacitor, recommend using high frequency low resistance electrolytic capacitor, capacity and current flow please refer to the technical specifications provided by manufacturers. C4 to remove high frequency noise
2. In the dotted box in Figure 2 are the EMC filters that are plugged in to meet higher EMC requirements and can be dispensed with for general applications.
3. The company has the dotted line box L1, CX, NF to form a filter for customer support use, model FA01.

Typical values for external circuit components

MODEL \ COM	R	NF	L	MOV	C1	C4	C5
RM-01-05	20Ω/1W	NF is a common-mode inductor with inductance of 30MH and current of 0.2A-0.5A.	1mH/0.5A	MOV is piezoresistive and the recommended value is 14D471K	CX is safety capacitance, 104K/275V	104K/50V (Ceramic chip capacitor)	470uF/10V
RM-01-09							470uF/16V
RM-01-12							330uF/16V
RM-01-15							220uF/25V
RM-01-24							100uF/35V